

[SR-A – Récepteur écran



- 1) Plug the power adapter and insert the connector into the jack on the back.
- 2) Turn on the power switch on the right side of the receiver.
- 3) **Set the same Channel Number & Group Number** to connect with the transmitter.

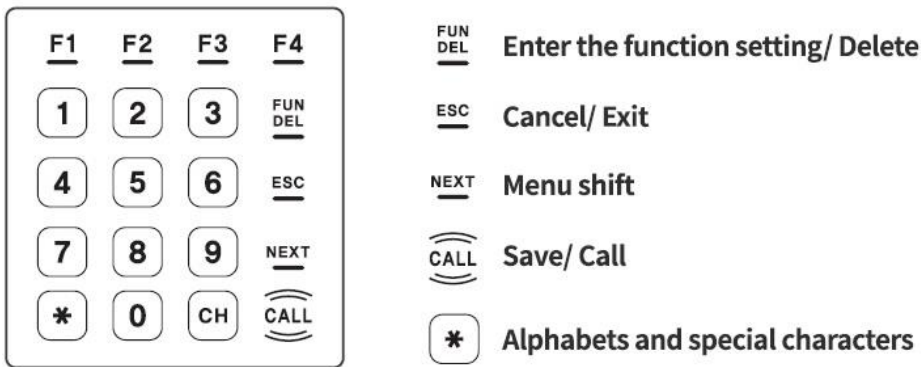
◆ **Channel Number Setting [E5]**

| | |
|--|------------------------|
| 1. Press FUN for 5sec to enter the extension mode. | channel number setting |
| 2. Press ▲ 4 times and then press ENT . | |
| 3. Set the channel number by ▼/◀▶/▲. * Range: 1~15 (Default: 1) | Set the channel number |
| 4. Press ENT to save. | |

◆ **Group Number Setting [E2]**

| | |
|--|----------------------|
| 1. Press FUN for 5sec to enter the extension mode. | Group number setting |
| 2. Press ▲ once and then press ENT . | |
| 3. Set the group number by ▼/◀▶/▲. * Range: 1~99 (Default: 0) | Set the group number |
| 4. Press ENT to save. | |

2. Keypad Description

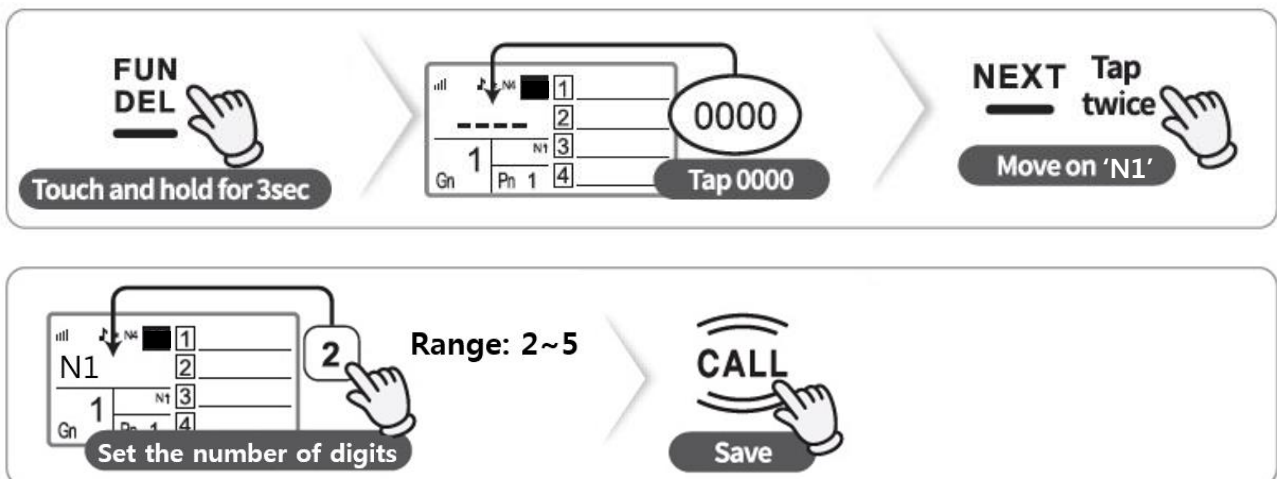


Description of Functions

| Functions | | Default | Range |
|--|----|---------|-------------|
| Channel Number Setting | Pn | 1 | 1~15 |
| Group Number Setting | Gn | 1 | 1~99 |
| The Number of Digits Displayed Setting | N1 | 5 | 2~5 |
| RF Output Power Control | RP | 2 | 1~2 |
| Beep Sound Setting | SC | 1(ON) | 0-OFF, 1-ON |
| Haptic Feedback Setting | VC | 1(ON) | 0-OFF, 1-ON |

3. Function Setting

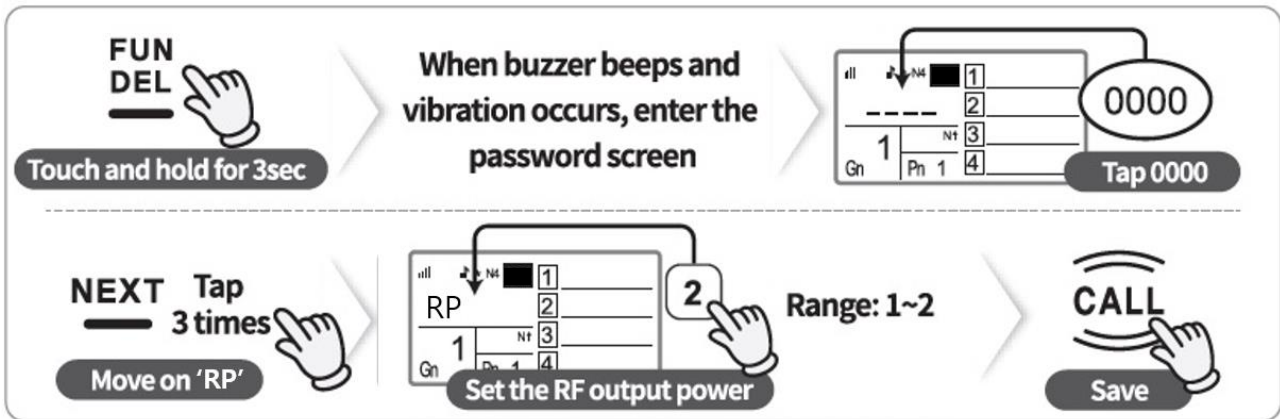
3-1. The Number of Digits Displayed Setting [N1]



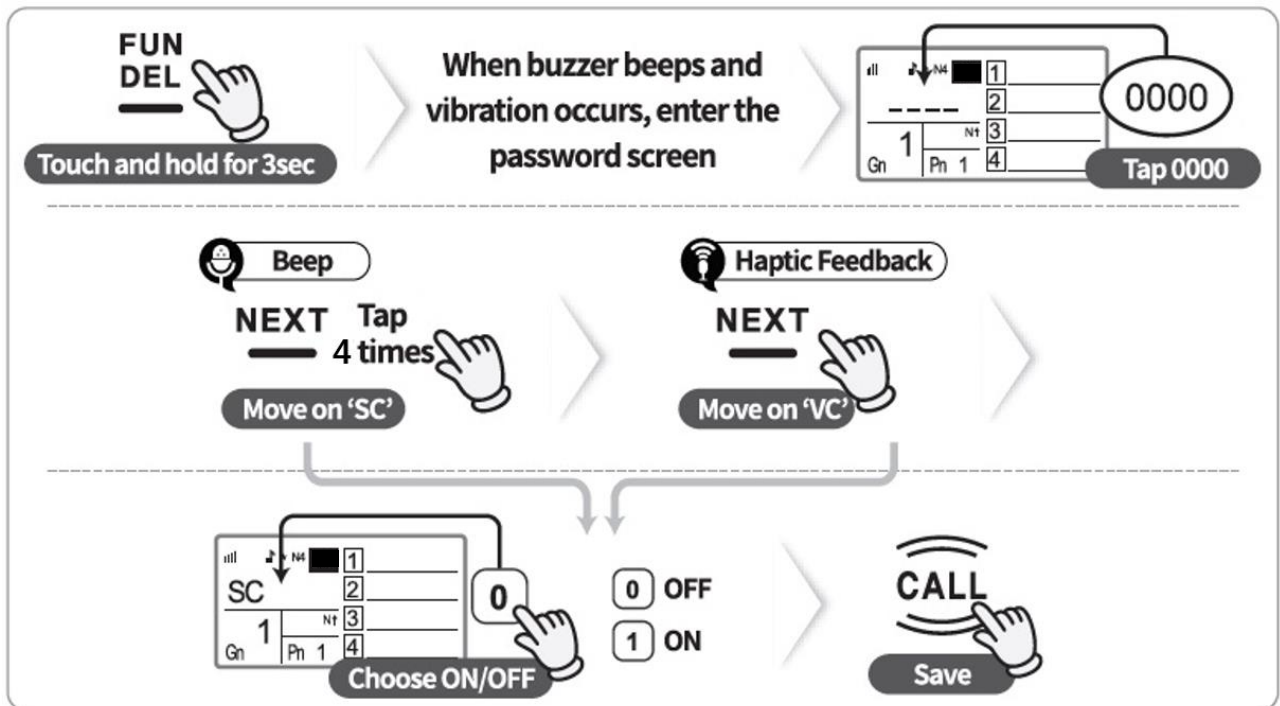
* Set the number of digits displayed according to your receiver type.

ex) SR-A2003 → '2', SR-A330 → '3', SR-A440 → '4'

3-2. RF Output Power Control [RP]



3-3. Beep [SC] & Haptic Feedback Setting [VC]



- **SYSCALL France - www.syscall.fr**
- 0033 (0)1 84 17 61 81 - contact@syscall.fr**
- 242 boulevard de Stalingrad 94500 Champigny sur Marne, France**

Manufacturer